



ENABLING QUALITY IMPROVEMENT IN PRACTICE

Tower Hamlets Our Latest Newsletter (30/06/2021)

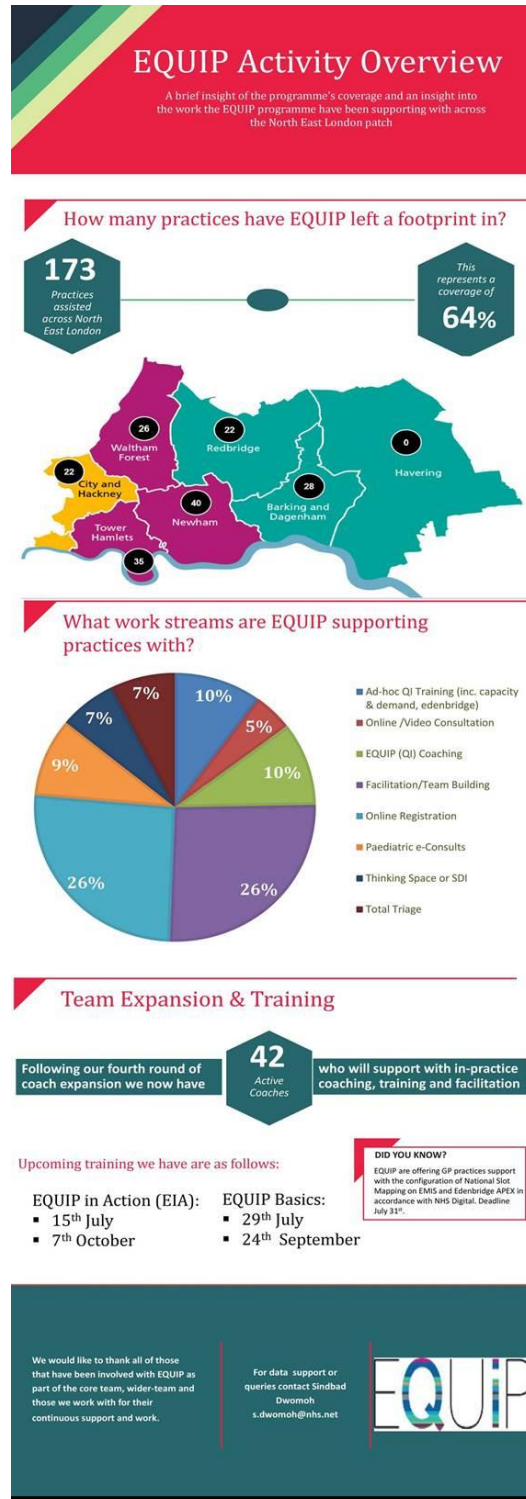
Your new GP Access Guide, and an EQUIP activity overview

Two quick headlines today, folks....

Firstly, we want to share the [GP Access Guide](#) which Tom with his EQUIP hat produced in collaboration with the RCGP, LMC, Health London Partnership, Healthwatch and NHS Digital. The report looks at access from multiple and different perspectives. It is built on best published evidence and on lots of lived experience in the field. It's a solid piece of work with lots of practical ideas to test. There's a quick access guide and more detailed manual. In Tom's words, "it's essential reading for Primary Care QI coaches". To that, I'll add – it's essential reading for *anyone* that offers services and appointments. Hope you love it!



Secondly, we are happy to share our latest infographic, which seems to be one of the things people most enjoy reading from us. Probably because it has fewer words than my usual emails. Enjoy skimming our numbers and updates:



And that is all!!! Emails will not be coming from me for the next seven months, because I am now off to have a baby, since the world does not yet have enough neurotic overachievers and I want to do my part in rectifying that. Queries go to the

team, whose deets are in the infographic, in my out of office, on our website, and hopefully also in your favourite emails. Wishing you happiness, change for the better, and most importantly, FUN.

Virginia

We think these emails are awesome. But if for whatever reason they bug you and you'd rather not receive them, please just reply "unsubscribe".